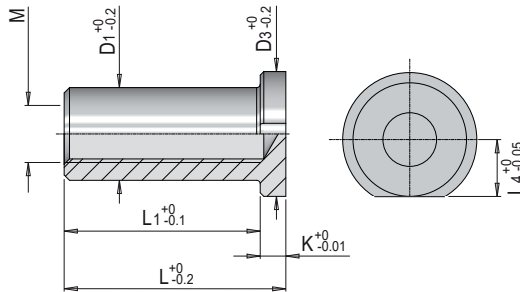


INSERTO FILETTATO TIRA TAVOLINO

Materiale: acciaio 1.1730*Material:* steel 1.1730*Werkstoff:* stahl 1.1730**Durezza:** 640 N/mm²*Hardness:**Härte:*

D1		30		40
M		M12	M16	M20
L4		16	16	21
D3		36	36	48
K		6	6	6
L	L1			
45	39	•	•	
49	43	•	•	
53	47	•	•	
58	52	•	•	
77	71		•	•
87	81		•	•
97	91		•	•
117	111		•	•
127	121		•	•

Esempio d'ordine: EA3 = D1 x L x M**Order example:****Bestellbeispiel:**